

Cali Cabana Towels

Cali Cabana is a junior sized cabana style based on our popular California Cabana full sized cabana towel. The towels is 30" x 60", 10.75lbs, and uses the same 20D ringspun premium yarn as to its bigger cousin, the California Cabana. Sold as a retail and institutional towel.



Details

Part No	Description	Packaging (DOZ)	UOM	Bale/Carton	Quantity Per Pallet	Weight Per Pallet	UPC
CALICABANA-BLU	30x60" - 10.75LBS/DZ- Blue	4	DOZ	Carton	12	503	764950-30231-6
CALICABANA-GRN	30x60" - 10.75LBS/DZ- Green	4	DOZ	Carton	12	503	764950-30233-0
CALICABANA-GRY	30x60" - 10.75LBS/DZ- Grey	4	DOZ	Carton	12	503	764950-30230-9
CALICABANA-ORG	30x60" - 10.75LBS/DZ- Orange	4	DOZ	Carton	12	503	764950-30232-3

Technical Specifications

Pass Acceptable Fail

Size Tolerance - Length

L 1%



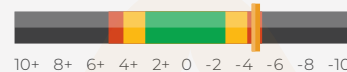
Size Tolerance - Width

W 1%



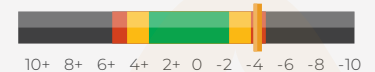
Dimensional Stability to Washing - Length

L -4.9%



Dimensional Stability to Washing - Width

W -4.7%



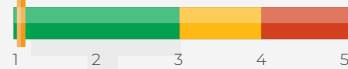
Weight Tolerance

+1%



Skew

2.60%



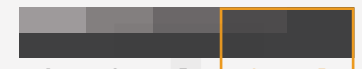
Color Shade

4



Staining

4-5



Dry Crocking

4-5



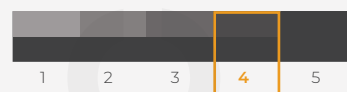
Wet Crocking

4



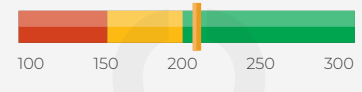
Color Shade

(variation after 5 washes) 4



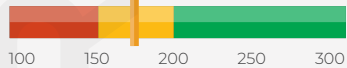
Breaking Strength

length 227N(51lbf)min



Breaking Strength

width 179N(40lbf)min



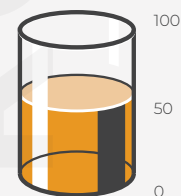
Lint

(After 5 Laundering Cycle)



Absorbency

58%



The standards that we are measured by are globally-recognized.
The standards that we hold ourselves to are higher.

Size & Weight Tolerance

Since these are natural product (woven) so there will be a variation in size. The Tolerance is set so that it does not go anything beyond the set limit.

Dimensional Stability to Washing

Measured shrinkage after 3 laundering (washing+Drying) cycle.

Skew

Skewing is the condition in which the filling yarns in fabric do not lie perpendicular to the warp yarns throughout the width of the towel.

Differential Shrinkage

Measured the differences of width between the dobby area and Center of the towel after 3 laundering cycle.

Absorbency

Testing surface water absorption time or percentage. The faster the time or the higher the percentage the better.

Color Shade

The shade is first matched with given Pantone # using Spectrophotometer. AATCC Gray Scale for color change is a scale of grey chips of different shades ranges from 1-5 and using the gray colors, the intensity of shade is determined against a given pantone # or original shade if they are in darker side or lighter side. 1 being lightest and 5 being darkest. **Details of Gray Scale can be found in the attached PDF file (Page # 12).** This process is done inside a **light box** with specific light source to avoid other light interference.

Staining

Staining uses a similar set of chips as the color shade standard, except a chip in each pair is white (not grey). Contrasting pairs of chips are given numerical values from class 5 to class 1 (5 being the best). The test is to determine if a colored fabric will stain an adjacent undyed fabric.

Dry Crocking

Dry Crocking is done using a **AATCC Crock Meter** that rubs a dry piece of sample against a white fabric for a specific time. Then the white piece of fabric was measured against a AATCC Gray Scale for staining to see how much color was migrated. **See attached PDF (Page # 13).**

Wet Crocking

Same procedure as Dry Crocking. Instead of Dry specimen, a wet specimen is taken.

Color Shade Variation (after 5 washes)

After 5 Laundering Cycle, the shade of washed towel is measured against the Original shade to find out the variation percentage.

Color Fastness to Light

This is to test how much color is fading when it is exposed to light.

Whiteness

The whiteness test is done using a Spectrophotometer to find out the degree of whiteness. The higher the index is, the better it is.

Breaking Strength

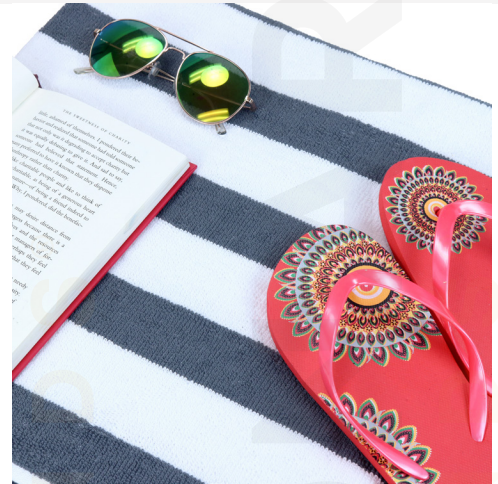
This is to test what force the towel is breaking in both warp and weft side. A particular machine is used to test this. This test determines the quality of yarn used and also the **EPI (Ends Per Inch) and PPI (Pick Per Inch)** used.

Lint

After 5 laundering cycle total amount of lints are collected and weighed to find out total percentage of lint against the weight of the towel.

Washing Lifecycle

Washing Lifecycle is to determine the total life of the towel.



ASTM International is an international standards organization that develops and publishes voluntary consensus technical standards for a wide range of materials, products, systems, and services.

ASTM D5433: Standard Performance Specification for Towel Products for Institutional and Household Use



AATCC—the American Association of Textile Chemists and Colorists—provides test method development, quality control materials, educational development, and networking for textile and apparel professionals throughout the world.

AATCC®: AATCC Gray Scale for Color Change
AATCC®: AATCC Gray Scale for Staining
AATCC®: AATCC - 9 Step Chromatic Transference Scale
20 AATCC AFU: After 20 Fading (Hours) Units



The International Commission on Illumination is devoted to worldwide cooperation and the exchange of information on all matters relating to the science and art of light and lighting, colour and vision, photobiology and image technology.

CIE Index®: Measured through Spectrophotometer (Data Color Machine)



11350 Norcom Road, Philadelphia, PA 19154 • (215) 458-5744 • www.monarchbrands.com